

## Principal's Report



It has been a wonderful start to the year at Glengala Primary School. Our students have returned settled, happy and ready to learn and there has been a strong sense of positivity and connection across the school.

As we begin the year together, we are also taking the opportunity to reset our shared expectations around attendance and school uniform. These expectations are important because they support a strong sense of belonging, pride and identity for our students. Being at school every day and wearing uniform helps students feel connected, included and part of our learning community.

This work reflects our PROUD values – being Respectful, Driven and Understanding and taking pride in who we are as a school. Over the coming weeks, you will see clearer communication and support in this space, as we continue to strengthen consistency and set our students up for success.

Thank you for your ongoing partnership as we build a positive and connected year ahead. We are PROUD of our Glengala community.

### Wellbeing

#### Sleeping for Success

With school routines restarting and an 8:45am start, early bedtimes are essential.

Helpful tips:

- 🕒 Keep a consistent bedtime
- 📵 Turn screens off before bed
- 🌬️ Create a calm wind-down routine
- 🌟 Praise the effort: Notice and celebrate when they try
- 🧸 Comfort counts: A favourite toy or book can ease the transition

Small, calm steps can turn bedtime from a battle into a habit.

Thank you for supporting positive sleep habits at home.

### Curriculum

#### Supporting Our Learners

This year, Emmy, Geraldine, Natalie, and Baz are working across the school in different roles to provide additional learning support for our students.

- 📖 Emmy is supporting students with literacy
- 🧮 Geraldine is working closely with students in numeracy
- 🌐 Natalie is providing targeted support for our English as an Additional Language (EAL) students
- 🖋️ Baz continues to support students through our Tutoring Program

These roles allow for extra support within classrooms, helping students build confidence and succeed in their learning.

### Community

#### Glengala Kindergarten APPLY TODAY!

Where learning, care and community come together.  
15Hr FREE community sessional kindergarten.

40A Talintyre Road, Sunshine West, 3020, VIC

Mon and Tues: 8:30am - 4:00pm and Thurs and Fri 8:30am - 4:00pm

15 hours of free sessional kindergarten

**ENROL NOW**

<https://forms.enrolnow.com.au/231649222804959>

Friday, 6<sup>th</sup> of February 2026

## Student of the Week

- ★ **1/2**  
Lina and Elias
- ★ **2/3**  
Lian Lian and Dustin
- ★ **3/4**  
Joseph Anau and Remaliyah
- ★ **4/5**  
Chok and Ilili
- ★ **5/6**  
Camilla
- ★ **Art**  
Marcus
- ★ **SWPBS**  
Liana, Tina, Amina, Joziah, Cing Nu

## Important Dates

### February

Wednesday 11<sup>th</sup> February  
School Nurse in for Foundation Students

Friday 13<sup>th</sup> February  
Interschool sports - Sirius College

Monday 16<sup>th</sup> February  
Parent Teacher Interviews Years 1-6  
Bookings open on Compass

### March

Monday 9<sup>th</sup> March  
Public holiday

Wednesday 11<sup>th</sup> Match  
NAPLAN Starts

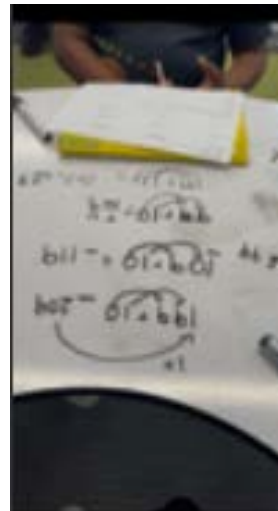
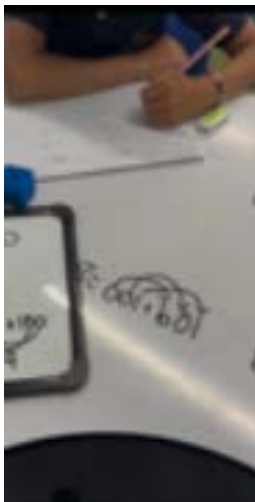


Please check Compass for  
excursion consent and payments.

## Celebrations

### Grade 5/6 Maths

Students in years 5/6 have been learning to add 10,100 and 1000 to different numbers.



Passionate

Respectful

Open to Learning

Understanding

Driven



# Glengala Primary School

Friday, 6<sup>th</sup> of February 2026

## Notices

### **BEFORE AND AFTER SCHOOL SUPERVISION**

Student safety at Glengala Primary School is our highest priority and the safe and appropriate supervision of students is an important element of our duty of care to students. Part of this duty is ensuring parents and students are aware of our student supervision arrangements before and after school.

Before school: School grounds are supervised at 8:35am

After school: School grounds are supervised until 3:25pm

Students on school grounds outside these times will not be supervised (unless they are attending a before or after school care program or supervised extracurricular activity).

Parents/carers are requested to ensure that students do not attend school outside of these supervised times unless they are attending before or after school care, or a pre-arranged supervised activity (i.e. sports practice).

Families are encouraged to contact Kelly Club on 0423 795 982 or [glengala@kellyclub.com.au](mailto:glengala@kellyclub.com.au) for more information about the before and after school care facilities available to our school community or if you would like any further information about our student supervision arrangements, contact the school directly.

For a copy of our school's Yard Duty and Supervision Policy please refer to our website. This policy includes Glengala Primary School's student supervision arrangements across the school day, including before and after school.

### **ANNUAL PRIVACY REMINDER FOR OUR SCHOOL COMMUNITY**

Our school collects and uses student and parent personal information for standard school functions or where permitted by law, as stated in the [Schools' privacy policy](#) and the [Schools' privacy collection notice](#). Our Photographing, Filming and Recording Students policy [<https://www.glengala.vic.edu.au/page/4/Policies>] describes how we collect and use photographs, video and recordings of students. The policy also explains when parent consent is required and how it can be provided and withdrawn.

We ask parents to also review the guidance we provide on how we use Compass, SeeSaw, [Google and Workspace for Education](#) safely at the school and what parents can do to further protect their child's information. If after reviewing the guidance, you have any questions or concerns regarding your child using Compass, SeeSaw, [Google and Workspace for Education](#) please contact the school.

For more information about privacy, refer to: [Schools' privacy policy: information for parents](#). This information is also available in eleven community languages:

- Amharic
- Arabic
- Chinese
- Dari
- Gujarati
- Mandarin
- Somali
- Sudanese
- Turkish
- Urdu
- Vietnamese

Passionate

Respectful

Open to Learning

Understanding

Driven

### Notices

		<b>THEME: Super Scientist</b>			Weekly Activities Plan Kelly Club Glengala	
		Term 1 Week 3, 9th February 2026				
	Monday	Tuesday	Wednesday	Thursday	Friday	
6:30 - 8:15 am	Fort Building & Structured Free Time	Pikelets & Structured Free Time	Origami & Structured Free Time	Craft Sample & Structured Free Time	Board Games & Structured Free Time	
8:15 - 8:30 am	Game: Simon Says	Game: Noodle Tag	Game: Rob the Nest	Game: Staff Choice	Game: Wacky Relays	
3:15 - 3:30 pm	Sign In & Structured Free Time	Sign In & Structured Free Time	Sign In & Structured Free Time	Sign In & Structured Free Time	Sign In & Structured Free Time	
3:30 - 3:45 pm	Intro & Afternoon Tea Sandwiches & Fruit	Intro & Afternoon Tea Pikelets & Fruit	Intro & Afternoon Tea Corn Thins & Fruit	Intro & Afternoon Tea Sandwiches & Fruit	Intro & Afternoon Tea Cheese Rolls & Fruit	
3:30 - 3:45 pm	Game: Red Light, Green Light	Game: Traffic	Game: Midnight	Game: Handball	Game: Jedi Dodgeball	
	<b>GAME</b> Awesome Atoms	<b>DISCOVERY</b> Mentos & Coke Experiment	<b>SPORT</b> Test Tube Relay	<b>COOKING</b> Ziplock Ice Cream	<b>CRAFT</b> Super Species	
3:45 - 4:30 pm						
4:30 - 4:35 pm	Tidy Up	Tidy Up	Tidy Up	Tidy Up	Tidy Up	
4:35 - 4:50 pm	Snack Time Vege Chips	Snack Time Fruit Salad	Snack Time Popcorn	Snack Time Baking	Snack Time Vege Sticks	
4:50 - 5:15 pm	Homework & Quiet Time	Homework & Quiet Time	Homework & Quiet Time	Homework & Quiet Time	Homework & Quiet Time	
5:15 - 6:00 pm	Game: Bom Bom Bom & Projects	Game: Catch the Dragons Tail & Projects	Game: Caterpillar Race & Projects	Game: Cloud Hopping & Projects	Game: Coin Rugby & Projects	

E: glengala@kellyclub.com.au

kellyclub.com.au/glengala

P: 0423795982

**Staff qualifications, certifications & responsibilities:**

- Studying towards or have completed a Diploma or higher qualification in the education sector
- Hold a right to work with children check such as WWCC
- Enthusiastic and passionate about providing engaging activities
- Planning and preparation of innovative activities, so kids want to come back for more
- Excellent supervision and safety of the kids in our care

Staff are also required to obtain:

- Level Two first aid training
- Anaphylaxis training
- Asthma training



**ENROL**

All parents must complete an enrolment form. This is a legal requirement. Visit KC Custom U... to find out more.

**BOOKING**

Beforecare – 6:30am - 8:45am  
Per child - Casual \$21.71, Permanent \$20.66  
Aftercare – 3:15pm - 6:15pm  
Per child - Casual \$32.53, Permanent \$30.45  
Holiday Program – 6:30am - 6:00pm  
Per child - \$79.99 per day, plus event days Inclusion \$30 and Excursion \$40

Program fees will not be charged if a child is away as long as you notify us 24 hours prior. We accept casual and permanent bookings.

**CCS (Childcare Subsidies)**

Your family can enjoy up to an 80% reduction in Kelly Club fees – depending on factors like combined family income, activity cost, and service type. The subsidy is paid directly to Kelly Club and will be passed on to eligible families as a fee reduction. See our Program Coordinator for information.

Additional subsidies – up to 100% – may also be available depending on your situation.

**CONTACT US:**  
Contact: Zainab Karimi  
Email: glengala@kellyclub.com.au  
Phone: 0423 795 982  
Facebook: kellyclub Australia



**CCS PROGRAM SUBSIDIES AVAILABLE!**



**FUN PROGRAMS THAT KIDS LOVE!**

**KELLY CLUB OSHC GLENGALA PRIMARY SCHOOL**

**WE OFFER:**

- Onsite programs
- A safe and supportive environment
- Trained and experienced staff
- Structured activities
- Relaxed chill-out time
- Yummy, healthy food
- Fun, fun and more fun

SPORTS COOKING ART GAMES + MORE!



**FOR INFORMATION OR TO BOOK ONLINE**  
www.kellyclub.com.au

Passionate

Respectful

Open to Learning

Understanding

Driven